

# Photoshop Elements 6 Updates to Digital & Hybrid Scrapbooking & Card-Making

By Patty Debowski

Updated January 1, 2009

Photoshop Elements 6 is similar to Version 5, but it looks very different because of the color change. Once you get past the dark gray background you'll see the similarities. I apologize that the screenshots are so dark and difficult to see in these examples, but this is out of my control because Photoshop Elements 6 is dark!

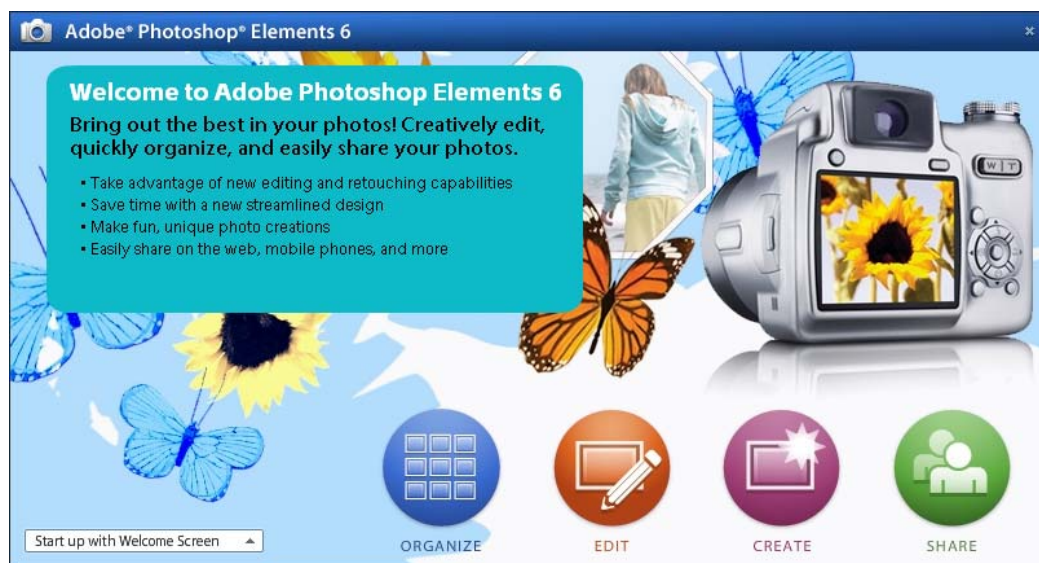
I've put this in a PDF format so that you can print it out and keep it with your book. If you're like me, you don't want to stop scrapping to go searching for the information you need on the web. I've also used the page numbers from the book, so you can easily tell if there are updates for the information you're reading at the time. My book can easily be used for all versions of Photoshop Elements.

## User Guide

Adobe does not ship a user's guide with Photoshop Elements 6. To download your own copy go to: [http://www.adobe.com/support/documentation/en/photoshop\\_elements/](http://www.adobe.com/support/documentation/en/photoshop_elements/). You may also order a printed copy from the Adobe Store for \$20.

## Page 47 Welcome Screen

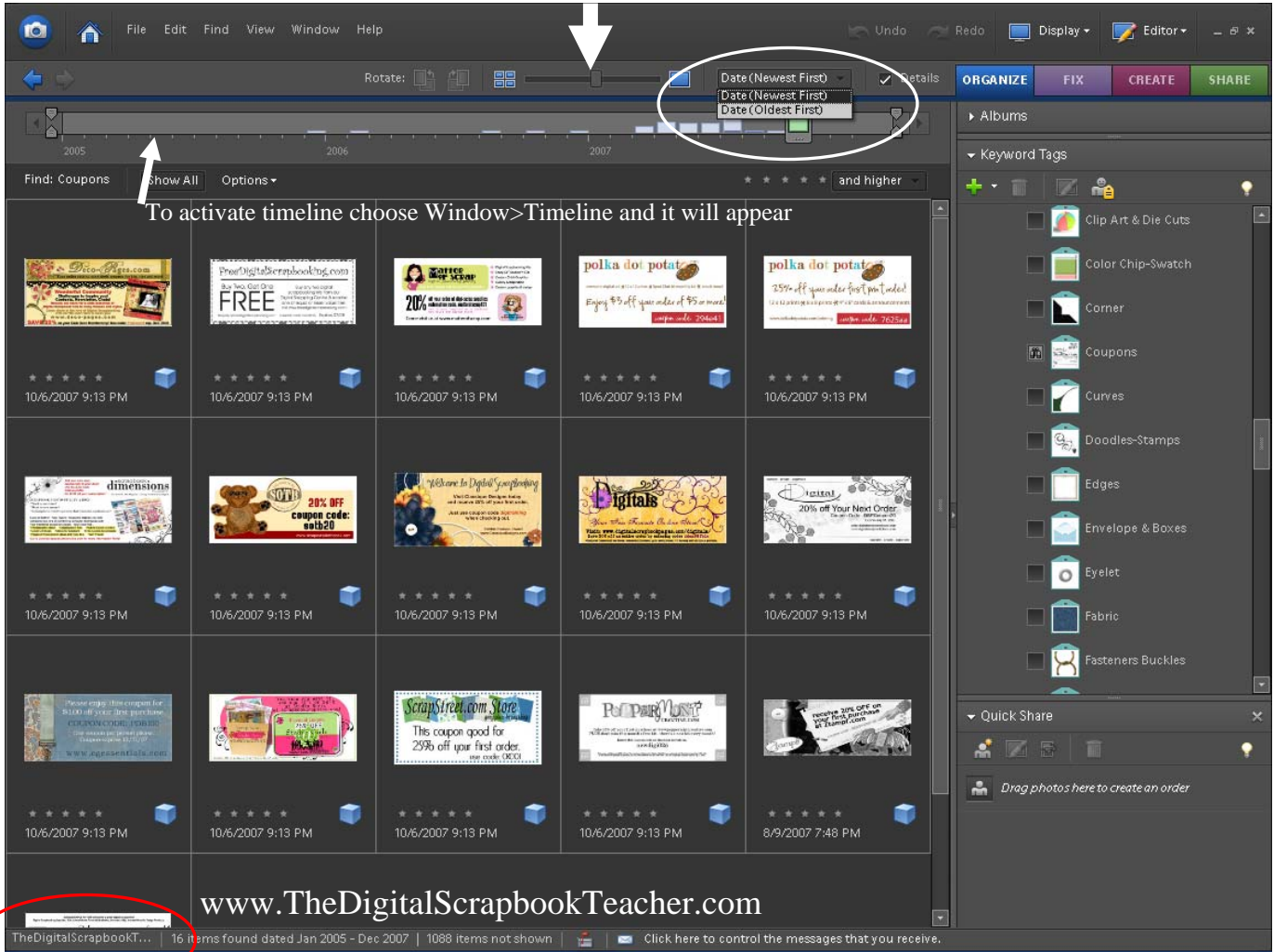
The Welcome screen looks different but it's essentially the same. To skip the Welcome Screen, click on the drop down list and choose Edit or Organize. I choose Edit so that every time I open the program it opens in the Editor.



## The Organizer

My happiest customers are those that have purchased my Organizer Catalog Back-up DVD and installed it on their computer. They instantly have all of the items on the book DVD organized by color, type, designer, theme, etc., and have a huge head start on organizing their digital scrapbooking supplies. If you are struggling with organization, please check this item out in my store.

The screen shot below shows some of the digi-scrapping store coupons available to my customers who purchase the book. If the coupon is expired try it anyway most of the stores that contributed coupons have extended the expiration dates. If it won't work contact the website and they will probably extend the expiration date for you because they're all looking for new customers.



Once again, the biggest difference between the version 5 & 6 Organizer is how it looks. They have also moved a few items. Basically they have flipped the Organizer. What used to be at the top is now at the bottom and vice versa!

If your Organizer screen does not have the Menu bar please read the tutorial on our What's New page at [www.TheDigitalScrapbookTeacher.com](http://www.TheDigitalScrapbookTeacher.com).

Collections are now called **Albums**. The advantage of using an Album/Collection is that you can change the order that the images appear.

The **Name of the Open Catalog** is now found at the bottom of the screen instead of at the top (shown circled in red).

The option to display your images by Import Batch or Folder Location has been moved. Click on the **“Display”** icon to find this option.

The slider to increase/decrease the size of your image thumbnail has been moved from the bottom of the screen to the top (see white arrow).

The **Star Tags** have been changed in version 6. The Organizer used to have a set of tags for 5-1 stars as a default. These came in handy when I'd take several photos of the same thing that were each a little bit different. I'd find the best one and tag it with the 5 Star tag. Now the stars are located below the image. Click on the appropriate star to tag it, or select several photos at a time and click on a star to tag several. To find all of the 5 star tags, click on the 5 stars on the top right of the screen. Right clicking on the image also allows you to add star tags. I think this new system is much more complicated than it needs to be. You'll have to fool around with it a little bit to get it to suit your needs.

**Fix** will display several of the Quick Fix type options available to fix your photos in the Organizer. Some of these options were, and still are available by clicking on the Edit tab, or right clicking on the image thumbnail.

**Create & Share** were also in version #5. If you want to order photos, photo books, or calendars through Adobe and Kodak this is the place to do it.

## Page 48

### Organizer Catalogs

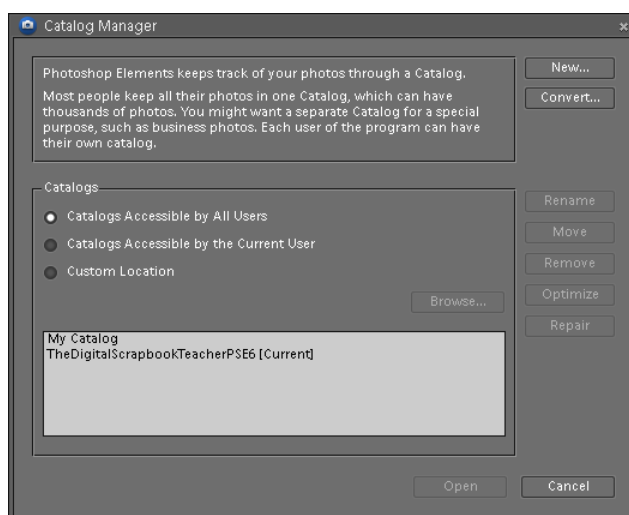
Since I am the only person who uses my computer I have all my Catalogs Accessible by All Users. You may want to change this option.

If you are used to working between two catalogs as I suggest, (photos & scrapbook supplies), be aware that the open button has been moved from the top of the dialog box to the bottom. This takes a little bit of getting used to.

Photoshop Elements 6 Catalogs are now stored:

**Windows XP:** C:\Documents and Settings\All Users\Application Data\Adobe\Photoshop Elements\Catalogs

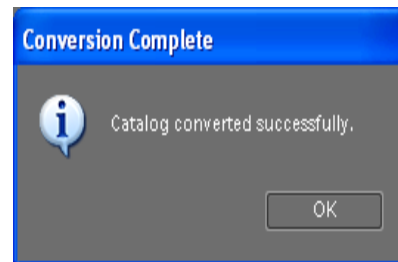
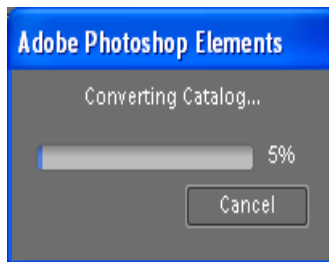
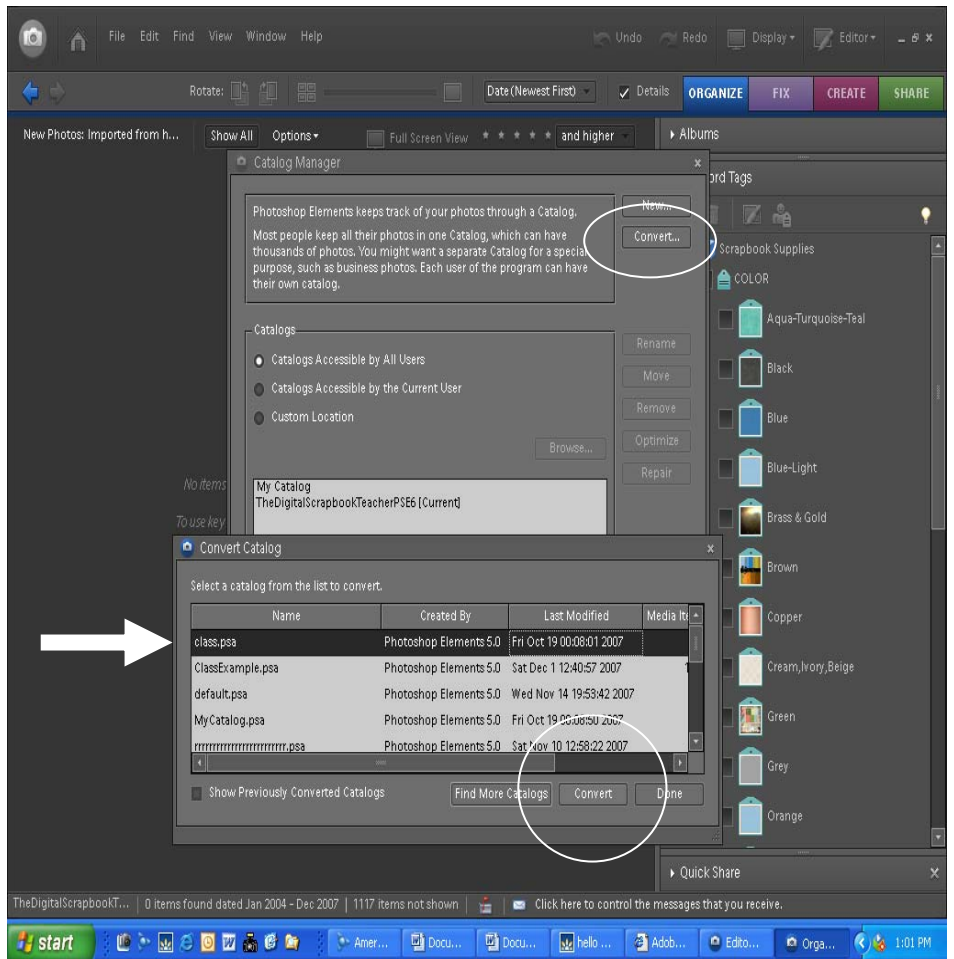
**Windows Vista:** C:\Program Data\Adobe\Photoshop Elements\Catalogs



## Converting a Catalog

If you have upgraded from an older version of Photoshop Elements and used the Organizer, you will need to convert the catalog. This is easy, but may take some time depending on the size of the catalog. Choose File>Catalog>Convert and choose the catalog you wish to convert for use in version 6. Click on Convert at the bottom of the screen. Click on Done when you're finished.

Be careful if you choose to go back to version 5 and work with the Organizer. If you import images into the Photoshop Elements 5 Organizer it will not appear in the version 6 Organizer. They are two different catalogs once converted.



## Installing My Instant Tags File to Save You Hours of Work

### Page 50

If you choose to install these tags (included on the book DVD) you will need to tag all of the items on the book DVD which took me about 10 hours. I have available for purchase, everything already tagged. This is not a super sales job! I have so many people who didn't understand they could purchase all of the items tagged and wished they would have purchased this item in the very beginning! If you purchase my Organizer Catalog you do NOT have to install the tags file on the Book DVD, because ALL the work is done for you. Install the Organizer Backup Catalog and start digi-scrapping with over 1000 digital elements already tagged.

With the Organizer open, click on the bright green + symbol under the word Keyword Tags, choose From File and locate the file. To Install my instant tag file go to the book DVD and Open the Photoshop Elements File, inside that file is a folder called Organizer Tags, and inside that one is a file called Tags. This is the file you need. In earlier versions when I installed these tags it was lightning fast. But in version 6 it took about 3 minutes or so.

© 2007 Patty Debowski-Author-Digital & Hybrid Scrapbooking & Card-Making with Photoshop Elements®

**BUY THE BOOK!** [www.TheDigitalScrapbookTeacher.com](http://www.TheDigitalScrapbookTeacher.com)

## **“Tags” have been changed to “Keyword Tags”**

### **Page 51**

To add new tags, categories, and sub-categories, click on the large green + sign because the New button has been removed.

## **“Back to All Photos” has been changed to “Show All”**

### **Page 53**

## **Missing Files in the Organizer**

### **Page 59**

The icon for a missing file has been changed. I have seen the same broken file icon in a gray color and a question mark in the upper left corner of the image on different occasions. The result is the same, you have moved or deleted the original image.

## **Organizer Problems**

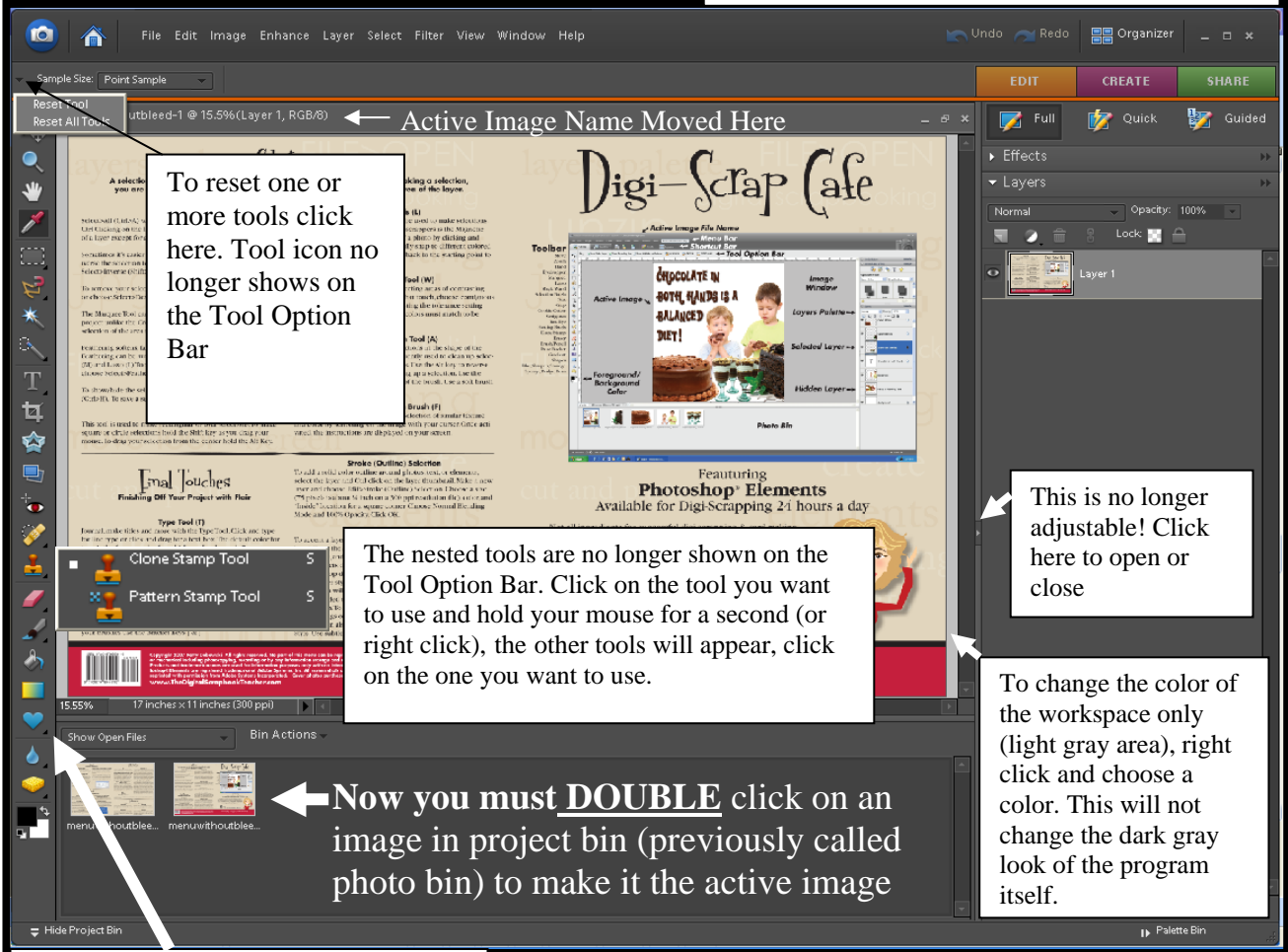
### **Page 61**

**Recover** has now been replaced with **Optimize & Repair**.

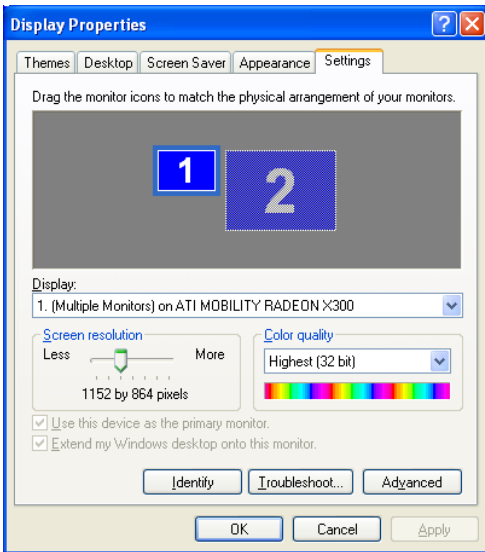


# The Photoshop Elements Editor Page 73, 77, & 78

The icon for tile and cascade views have been removed, but you can still chose these views by choosing Window>Images>Cascade or Tile

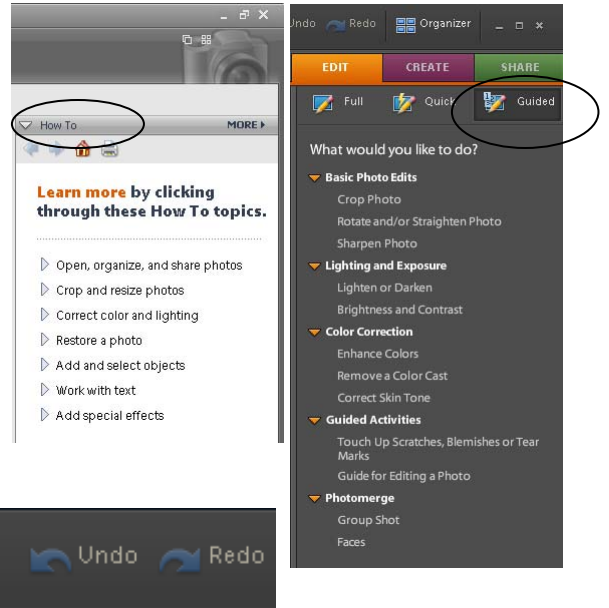


See next page for information regarding displaying the Tool Bar as a single wide column (shown) or as a double wide column (as yours probably is)



If you are used to your tool bar being in a single column you will need to change your display properties by right clicking on your desktop screen. On my monitor I had to change my screen resolution to 1152 x 864 to get the tool bar in a single column. To change your screen resolution, right click on your desktop screen, the Display Properties dialog box will appear, click on the Settings tab and adjust the Screen Resolution slider. Click on Apply and then OK.

While this may make your tool bar easier for you to use it may make seeing things on your screen more difficult because they're smaller at this setting.



Clicking here brings up the Welcome Menu

### “How To” has been replaced by Guided Edit

This is a great feature for the beginning Photoshop Elements user.

To activate, Click on Edit and then Guided and choose the topic you wish to follow. F6 in Photoshop Elements 5 activated How to, but it doesn't activate Guided Edit.

For Quick Fix, choose Edit and click on Quick.

Share, Create, & Organizer Icons have also changed in appearance.

### 79-80 Undo & Redo

The Undo & Redo buttons have returned, probably due to the outcry of so many users who have already learned to use the Ctrl>Z shortcut. I will continue to use the Ctrl>Z shortcut and the Undo History, so this isn't great news for me.

The option to increase the size of your Undo history beyond the default of 50 has now been moved from Edit>Preferences>General Preferences (Ctrl>K), to Edit>Preferences>Performance.

## Move Tool

### Move/Copy a Photo or Scrapbook Element to another File-Method 2

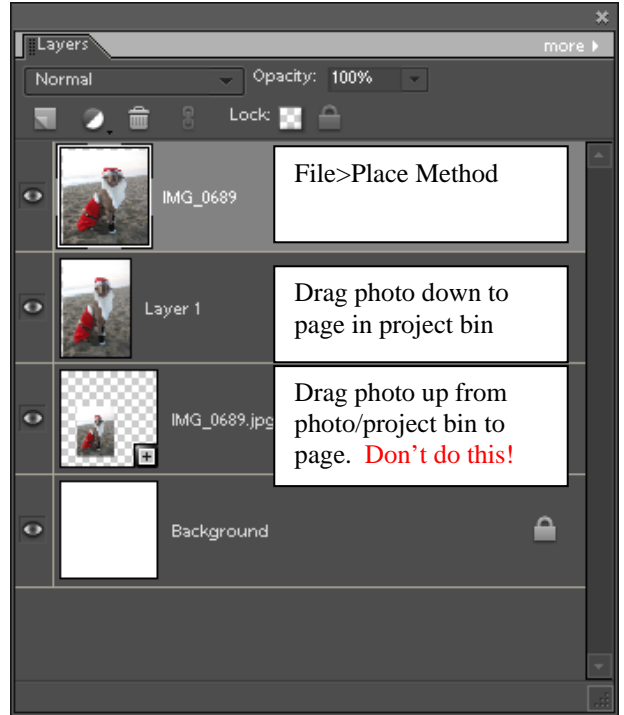
#### Page 85

Sorry, but this doesn't work the same anymore. When you drag an image up from the project bin (previously known as the photo bin), it becomes a frame layer.

If you absolutely loved dragging up from the photo bin (like me), because it named your layers with the image name, you can use the command File>Place. Using Place only allows you to open one image at a time, and place it on your active image.

### Move Tool –Arrow Keys

There is a glitch that causes problems when you try to move a layer with a layer style, such as a drop shadow with the Bracket keys that has been reported by many users on message boards. I also have this problem. To work around this aggravating problem type the shortcut Ctrl>T and you should be able to use your Arrow Keys.

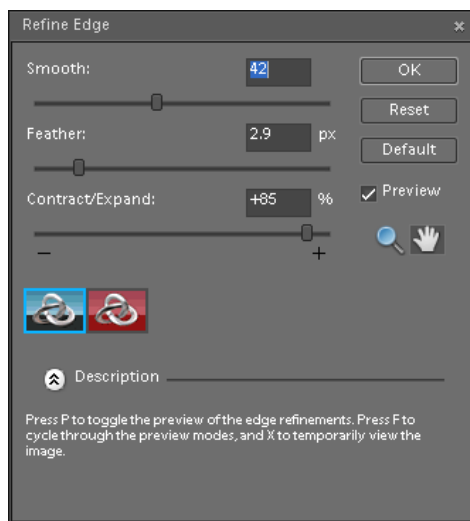


### Changing Blending Modes with the Move Tool

#### Page 91

Using the scroll wheel no longer works, use the arrow keys.

### Selections – New Feature Refine Edge Page 110



Select>Refine Edge has been added. This command will also smooth, feather, contract and expand a selection.

This option should be displayed on the Option bar for the Lasso, Magic Wand, and Quick Selection Tools.

### Marquee Tool

#### Page 112

Rectangular & Elliptical Marquees are no longer shown on the Option Tool Bar. Right click, or click and hold your mouse to display both tool options on the tool bar and choose the one you want. With the Marquee Tool selected, typing the letter M will also cycle through the tools.



## Lasso Tool Page 114

The three Lassos are no longer shown on the Option Tool Bar. Right click, or click and hold your mouse to display the tool options on the tool bar and choose the one you want. With the Lasso Tool selected, typing the letter L will also cycle through the tools.

The Refine edge option was also added to the Option Bar if it's not showing on Option Bar choose Select>Refine Edge.

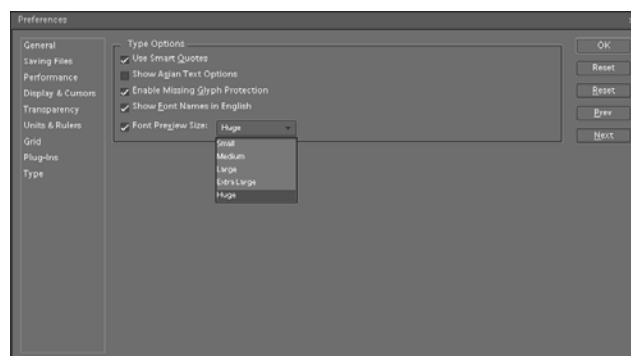
## Magic Selection Brush Tool (F) Page 120

This tool has been replaced by the Quick Selection Brush which is sort of like the regular selection brush with a brain. This brush knows where to select automatically. Now the Selection Brush and the Quick Selection Brush share the same (A) shortcut.

The two brushes are not shown on the Option Tool Bar. Right click, or click and hold your mouse to display the tool options on the tool bar and choose the one you want. With this tool selected, typing the letter A will also cycle through the tools.

## Type Tool (T) Preferences Page 129

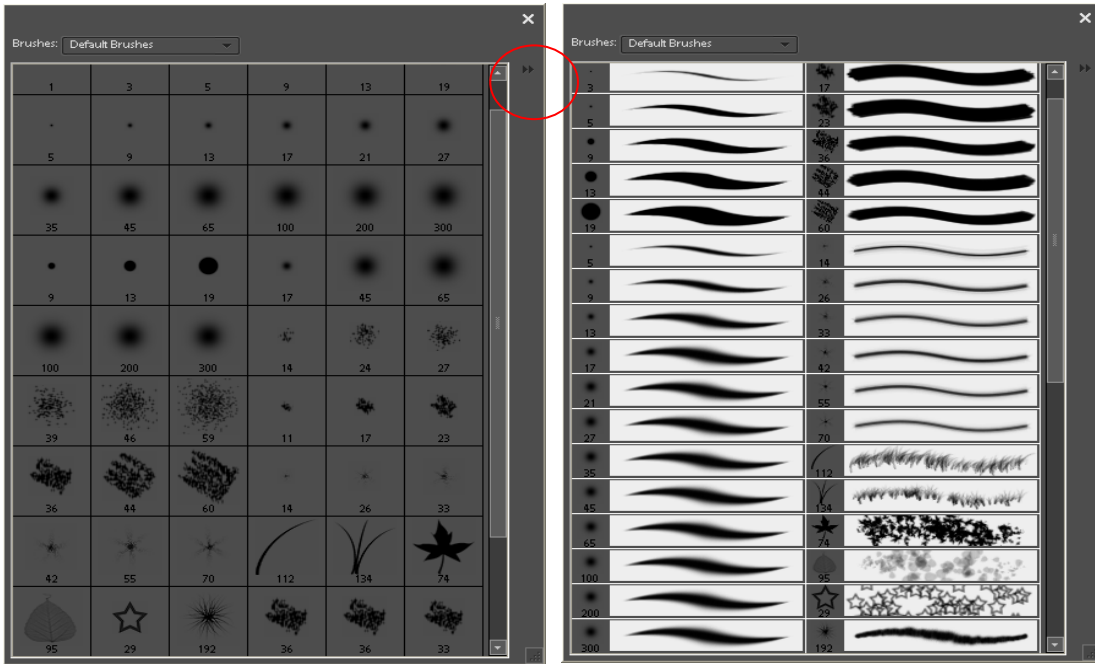
Adobe has now added two more font preview sizes for those of us with not so perfect eyes. New settings in version 6 are Extra Large and Huge.



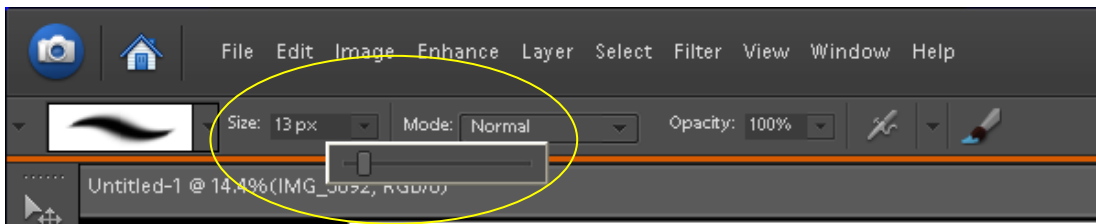
**Brush Previews (Including Selection Brush (A), Eraser (E), Brush (B), Pencil (N), Impressionist Brush (B), Spot Healing Brush (J), Clone Stamp (S), Pattern Stamp (S), Blur (R), Sharpen (R), Smudge (R), Sponge (O), Dodge (O), Burn (O).**

If you can't see your brushes well in this view, (shown in a larger view by dragging the lower right corner of the palette)...and who can, click on the arrow (inside red circle), and choose Stroke Thumbnail. The brush preview background will now be white, but it's not the same preview either, as you can see by specifically comparing the star brush.

Change this setting for one tool and all of the others tools will automatically change too.

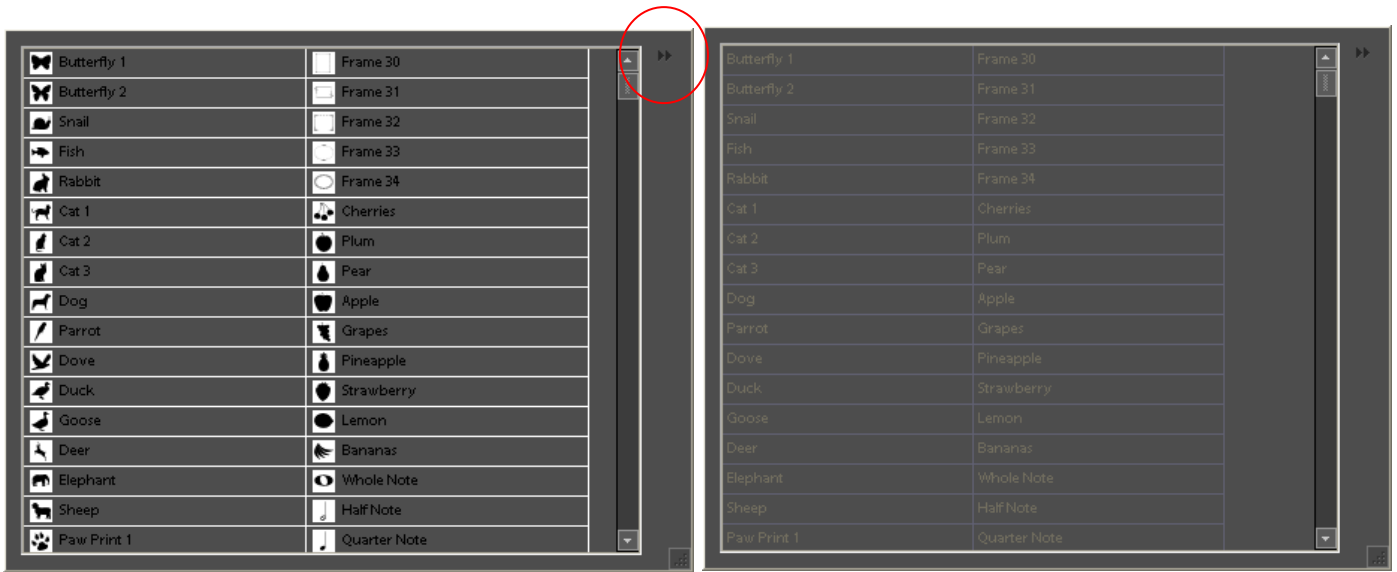


The tools that use brushes no longer have a dropdown box where you can enter a brush size, it has been replaced with a slider bar. Continue to use your Bracket keys [ & ], it's easier to size your brushes this way.



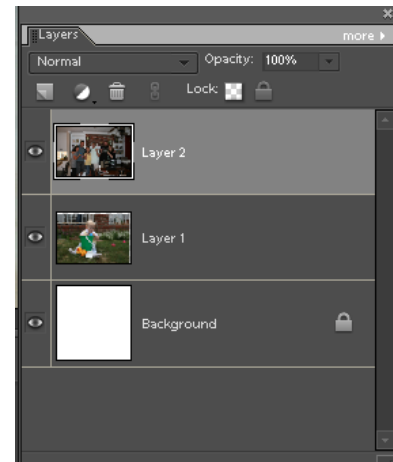
## Shape Libraries (Cookie Cutter Tool page 144 & Custom Shape Tool page 180)

My recommendation is to use the Large or Small Thumbnail setting to display custom shapes. Small list might be OK, but Text only is impossible for me to read...can anyone really read this?



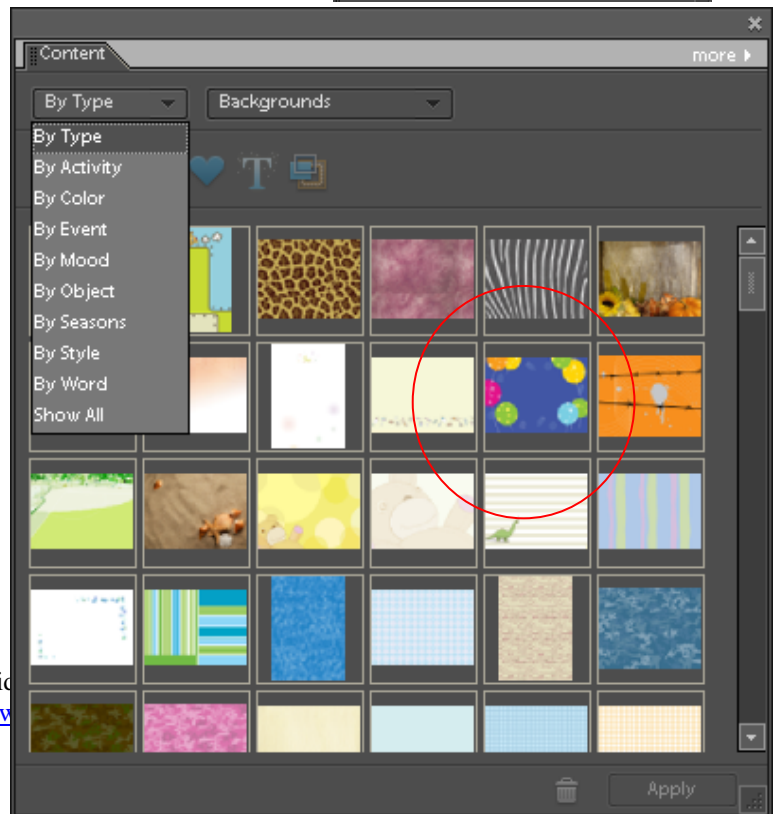
## Layers Palette Options Page 195 Selected/Active/Targeted Layer

The selected layer is now lighter in color than the unselected layers, which is opposite of Photoshop Elements 5. In this example, the top layer (Layer 2) is the selected layer.



## Background Layer (Backgrounds) Page 205

The Artwork & Effects Palette has been replaced by the Content palette. You can find this palette by choosing Window>Content. Drag this palette by the top tab into the Palette bin, or anywhere else you want to work with it. Now sorted by Content Type rather than Artwork Backgrounds, some of these are pretty nice. Make a new blank page and double click on the thumbnail, or right click and choose apply. Your original background layer will be deleted and replaced by this smart object background layer. Be aware, that depending on the size of your new blank file and the background you choose, you may not get the same finished look. For example, if you use the background circled



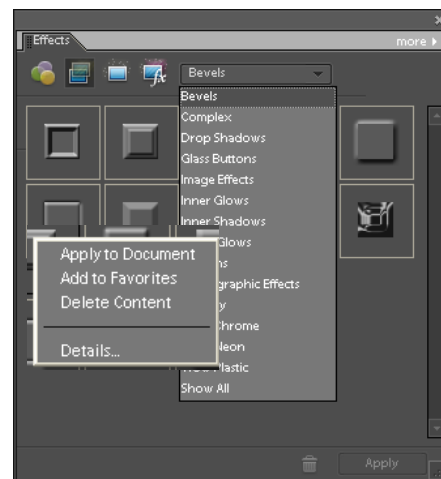
on a square page it will look different than this example, which is displayed in a landscape format.

Applying a theme from this menu will delete a background from this menu.

The smart objects behave differently than regular digital scrapbooking supplies. If you are confused don't use them. The only ones that I occasionally use are some of the frames.

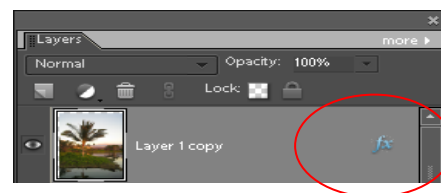
## Layer Styles Page 213

The Artwork and Effects Palette has been replaced by the Effects palette. Starting from the top left you will find the icons for filters, layer styles, photo effects, and all. Favorites have been moved to their own palette, which can be found by choosing Window and clicking on Favorites. To add an effect to your Favorites palette, right click and choose "Add to favorites". This example is for illustration purposes only, you can't get both boxes to open at the same time.



The icon to show that a layer style has been applied to a layer has also been changed.

When using the Move Tool (V) and the Arrow keys to move a layer with a layer style on it such as a drop shadow, there is a glitch in the program that I have experienced and many users on messages boards have also.



## Adjusting Layer Styles Page 214

Yippee! You can now adjust the lighting angle on just one layer! Thanks for bringing this back Adobe! This is helpful for projects that need to be folded, like pop up cards, etc.

## Single Simple Scrapbook Page 253

### Single Scrapbook Page or Flat Card Using a Digi Kit Page 255, 256

See example shown above for page 85

Original Sentence in book-With your blank scrapbook page as your active image, drag your photos onto your blank scrapbook page by dragging up from the photo bin. Adobe has changed Photoshop Elements 6, dragging up creates a frame layer.

Change to-With your photo as the active image drag down to your scrapbook page in the project/photo bin.

## Special Effects Layer Styles Sepia Method Page 327

The Artwork & Effects palette is now called the Effects palette as shown above with page 213 information.

## Installing Actions, Layer Styles, Brushes, Patterns, Textures and Custom Shapes Page 356

Adobe has made installing actions, layer styles, and custom shapes much more complicated in Photoshop Elements 6 & 7 than in earlier versions. For this reason I recommend purchasing a program that allows you to drag and drop your actions, layer styles, custom shapes and instantly install them.

To purchase the program go to [www.graficalicus.com](http://www.graficalicus.com) and purchase the Add-O-Matic.

Download the file.

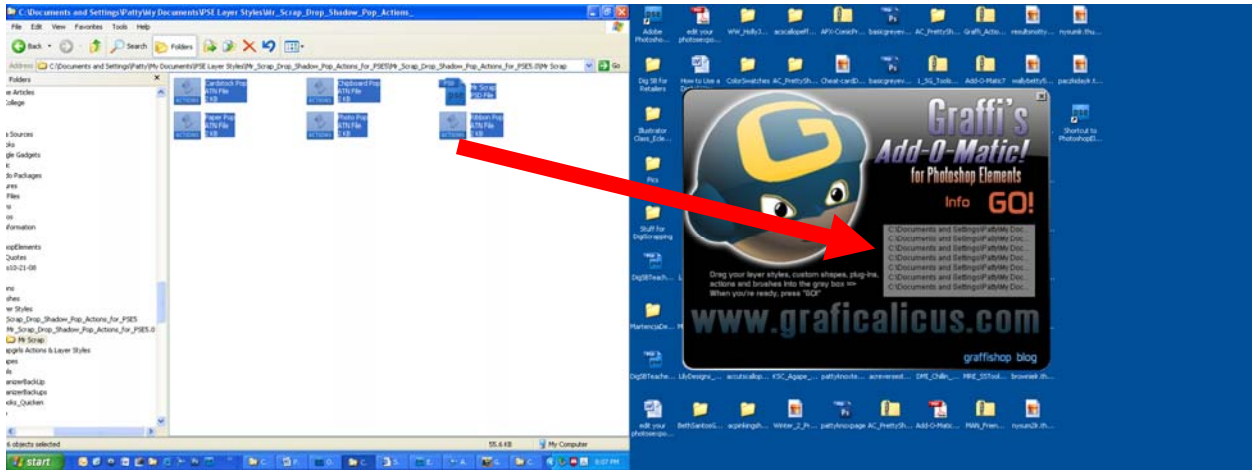
Unzip the folder.

Click on the icon and click run.

Close Photoshop Elements.



Click and drag your actions, layer styles, etc to the gray box.



Click on the big red Go button. Choose Photoshop Elements 6 or 7. You will get a message saying your items have been added. You can launch Photoshop Elements by clicking where it says "Quit and Launch Elements 6 or 7". It's that easy!



If you want to install your items yourself you can still do it. The problem is, if you don't have the XML file your installation won't work quite right for actions, layer styles, and custom shapes. Brushes, Patterns, Textures, Swatches, and Gradients are easy. Shown below is step by step instructions to make your own XML file. It's really not that hard, but it's work I'd rather not do.



### How to make your own XML file:

Go to one of the locations below where it says to install an XML file (example shows for actions). Right click on one of the files and choose copy. The XML file will be copied with the name “Copy of Original File” like shown.

Double click on the Copy of ..... file to open it.

This file is written in code and I have no idea what it means which is similar to the Tags file on the Book DVD!

Make the changes shown circled in red. Your files will have different names. The example uses the Atomic Cupcake Chipboard action on the book DVD, located in the Photoshop Elements folder.

Choose File>Save.

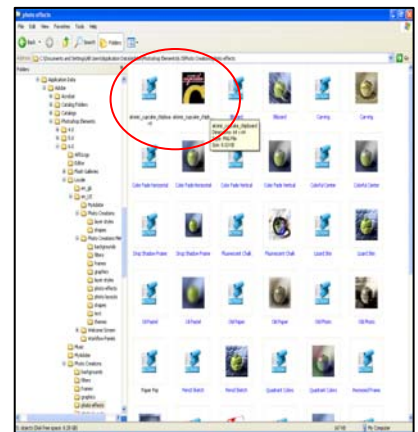
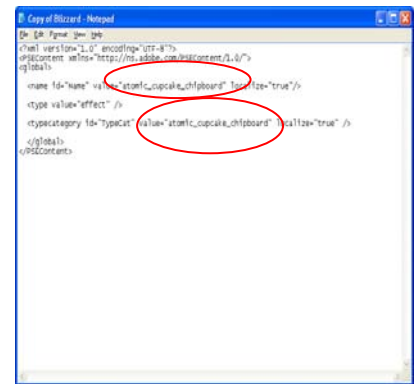
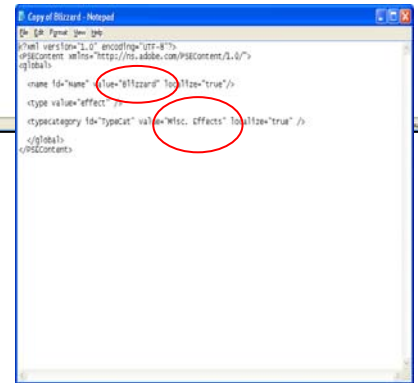
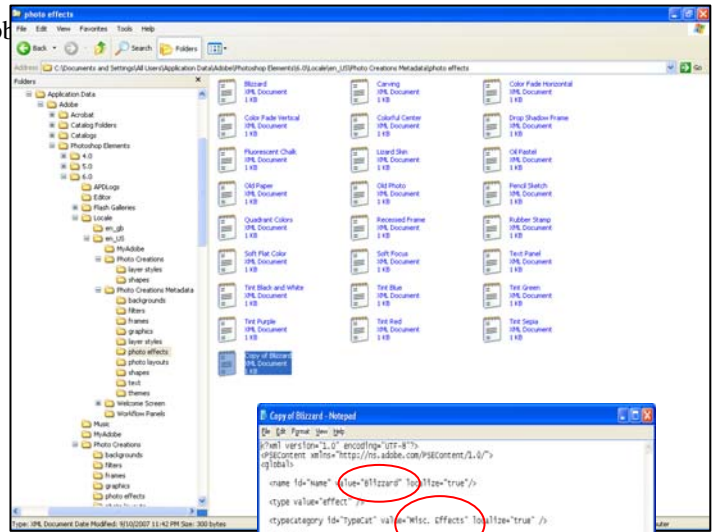
Close the file by clicking on the red x in the upper right corner. Rename the file with the exact name you used in the XML file.

### Actions – ATN Files – Example shown above

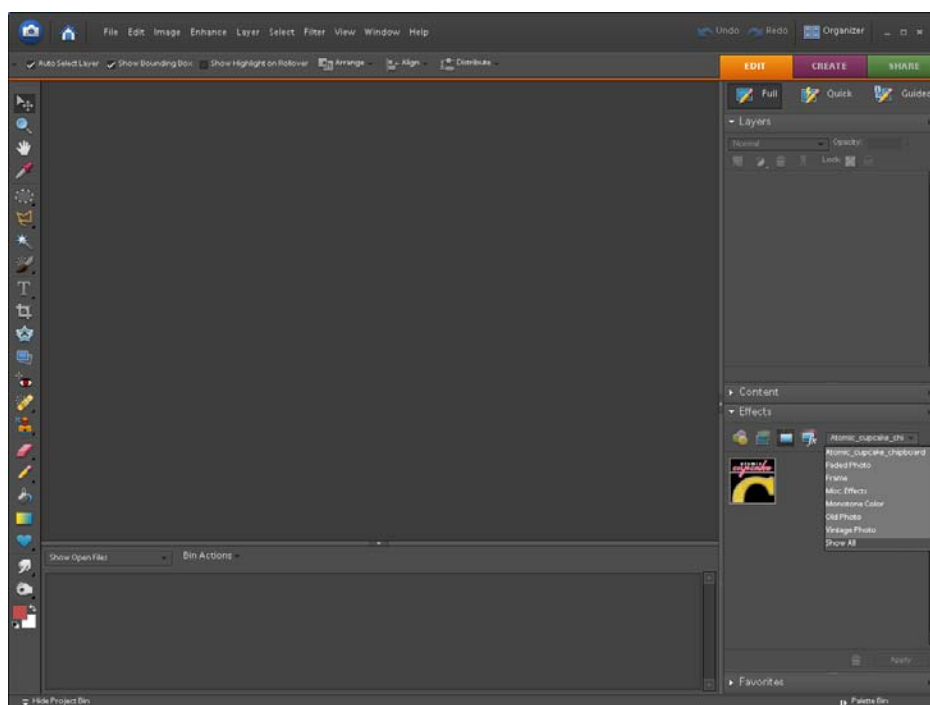
Actions used with older versions of Photoshop Elements come with a PSD file. Open the PSD file with Photoshop Elements and save it as a PNG file, when you save it you will need to save it with the exact name as the ATN file. Copy the ATN file and the PNG file to: C:\Documents and Settings\All Users\Application Data\Adobe\Photoshop Elements\7.0\Photo Creations\photo effects

If you have the XML file follow these directions, or make your own with the instructions above.

Install the corresponding XML file in C:\Documents and Settings\All Users\Application Data\Adobe\Photoshop Elements\7.0\Locale\en\_US\Photo Creations Metadata\photo effects



If you're lucky your action will install perfectly the first time. If it doesn't close Photoshop Elements and re-open it. If that doesn't work you can try deleting or renaming this file C:\Documents and Settings\All Users\Application Data\Adobe\Photoshop Elements\7.0\Locale\en\_US\MediaDatabase.db3"



### **Custom Shapes – CSH Files**

C:\Documents and Settings\All Users\Application Data\Adobe\Photoshop Elements\6.0\Locale\en\_US\Photo Creations\shapes

Install the corresponding XML file in C:\Documents and Settings\All Users\Application Data\Adobe\Photoshop Elements\6.0\Locale\en\_US\Photo Creations Metadata\shapes

### **Layer Styles – ASL Files**

C:\Documents and Settings\All Users\Application Data\Adobe\Photoshop Elements\6.0\Locale\en\_US\Photo Creations\layer styles

Install the corresponding XML file in C:\Documents and Settings\All Users\Application Data\Adobe\Photoshop Elements\6.0\Locale\en\_US\Photo Creations Metadata\layer styles

### **Brushes – ABR Files**

C:\Program Files\Adobe\Photoshop Elements 6.0\Presets\Brushes

### **Gradients – GRD Files**

C:\Program Files\Adobe\Photoshop Elements 6.0\Presets\Gradients

### **Patterns – PAT Files**

C:\Program Files\Adobe\Photoshop Elements 6.0\Presets\Patterns

### **Textures – JPEG or PSD Files**

C:\Program Files\Adobe\Photoshop Elements 6.0\Presets\Textures

### **Color Swatches – ACO Files**

C:\Program Files\Adobe\Photoshop Elements 6.0\Presets\Color Swatches

**Be sure to check out our brush sets! You can't beat the price!**

